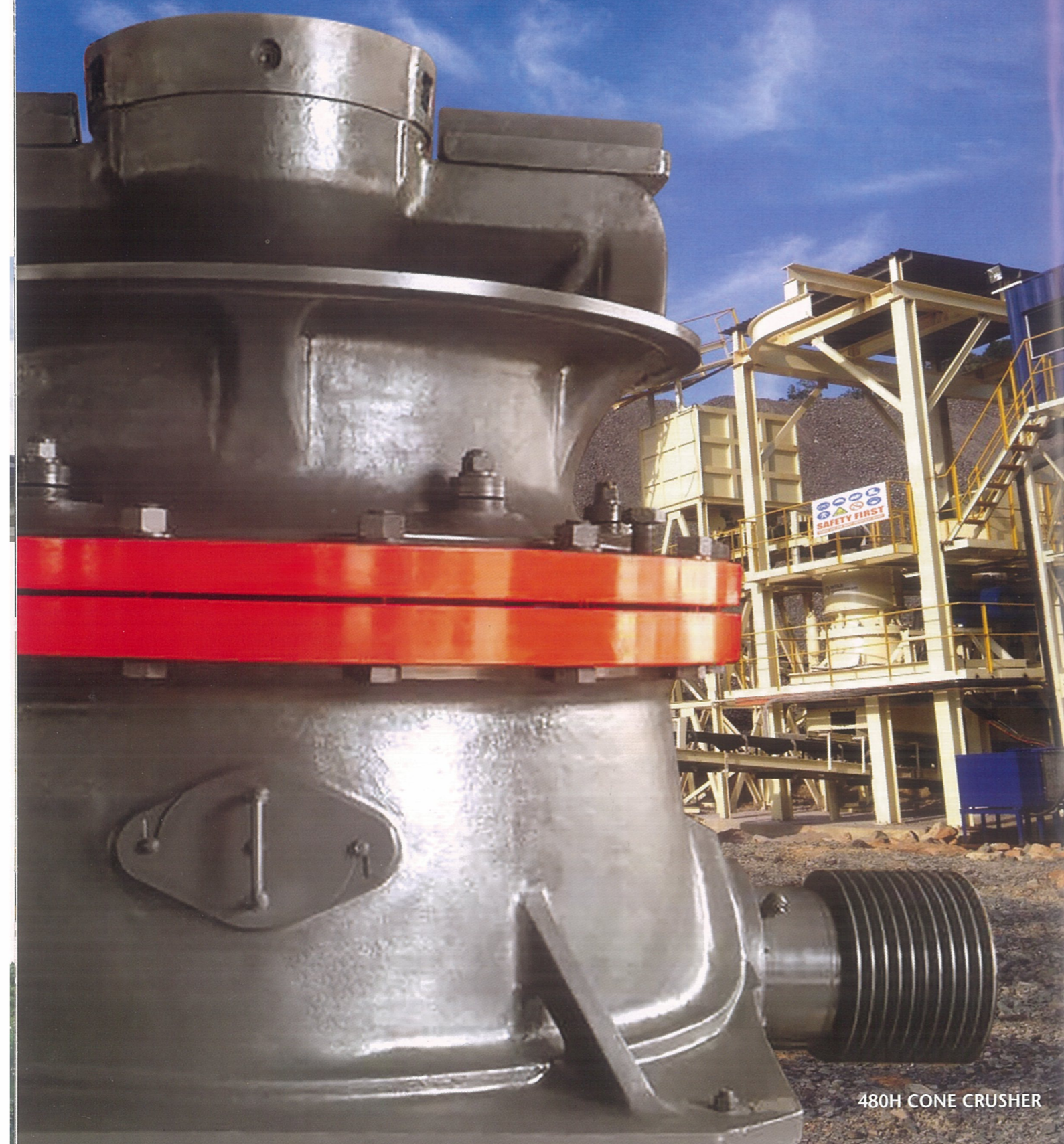


CONE CRUSHER

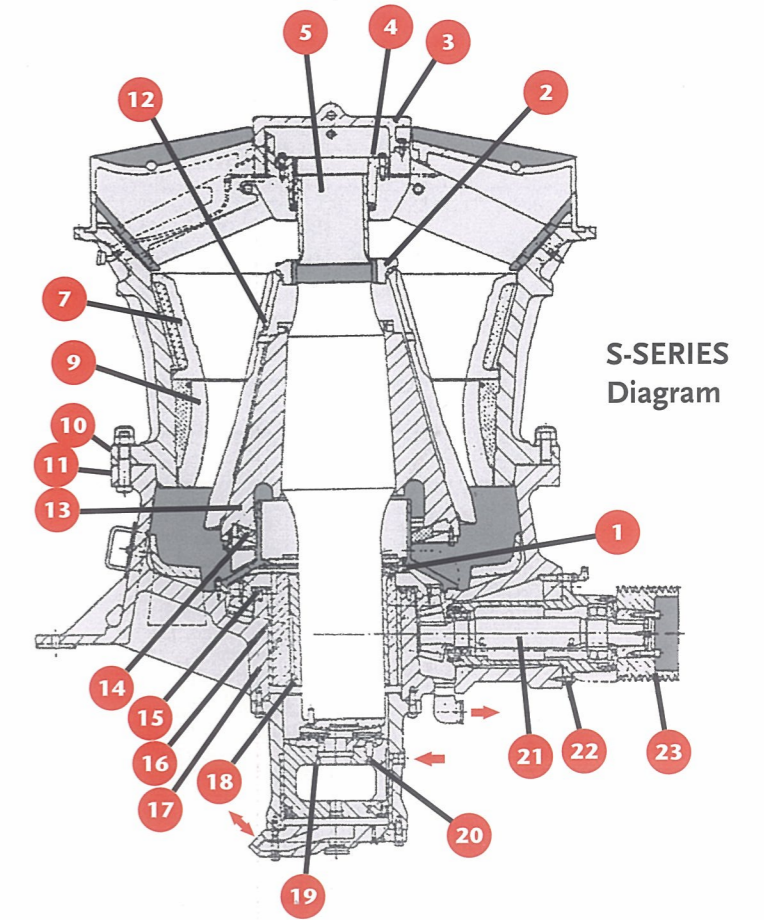


480H CONE CRUSHER

TTE Cone Crushers

Our cone crushers have been developed to crush feed materials into desired end products efficiently. Basically there is 2 types; **Hydrocone (H) & Superior (S)**. As a result, the H & S Series cone crusher offers several outstanding features that enable you to work efficiently in any secondary, tertiary or quaternary crushing applications.

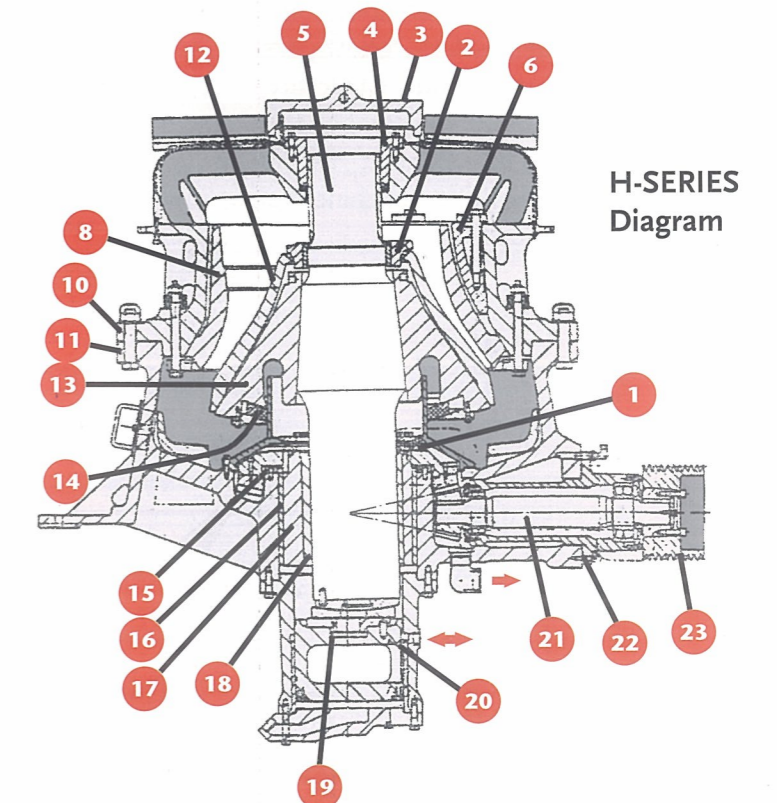
- Several stroke options allow H & S to maintain maximum crushing efficiency in the varying crushing applications.
- High crushing efficiency and end product quality with lowest per ton product cost.
- The steep head angle in S series guarantees trouble-free operation in varying feed conditions with high reduction ratio
- Reliably and economically



GENERAL INFORMATION

PARTS Name

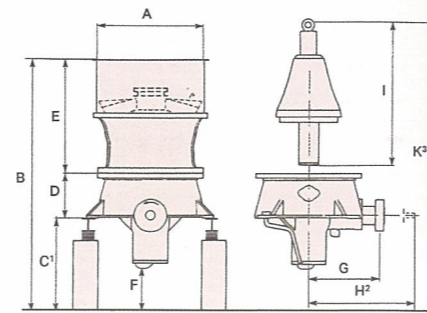
1. Location Bar	13. Headcentre
2. Head nut	14. Dust seal ring
3. Spider cap	15. Wearing plate
4. Spider bushing	16. Bottomshell bushing
5. Mainshaft	17. Eccentric
6. Filler ring	18. Eccentric bushing
7. Concave	19. Step bearing
8. Concave ring	20. Hydro piston
9. Lower ring	21. Pinionshaft
10. Topshell	22. Pinionshaft housing
11. Bottomshell	23. Crusher pulley
12. Mantle	



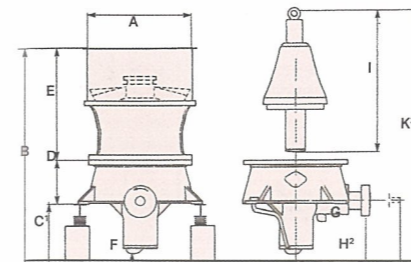
APPROXIMATE WEIGHT

	S-SERIES			H-SERIES		
	380S	480S	680S	380H	480H	680H
Approximate Heaviest lift during maintenance (kg)	5100	8100	16500	2900	4700	8500
Approximate Total Weight (kg)	12000	19300	35700	9200	14300	26800

DIMENSIONS



S-SERIES



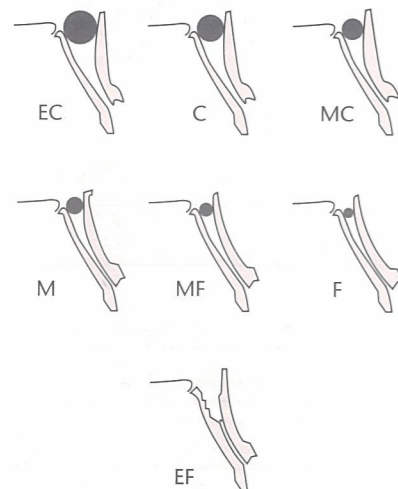
H-SERIES

Dimension (mm)	S-SERIES			H-SERIES		
	380S	480S	680S	380H	480H	680H
A	Ø1635	Ø2000	Ø2800	Ø1360	Ø1540	Ø2104
B	3485	4075	5100	2992	3410	4215
C ¹	1125	1300	1600	1125	1300	1600
D	655	745	860	655	745	860
E	1705	2030	2640	1212	1365	1755
F	422	452	631	422	452	631
G	1061	1280	1497	1061	1280	1497
H ²	1705	1900	2156	1705	1900	2156
I	2050	2420	2895	1688	1985	2344
K ³	4250	4930	5355	3570	4000	4835

Dimensions shown are approximate only. Use only certified drawings for construction.

CAPACITY, MTPH

The capacity figures given are approximate only and give an idea of what the crusher is able to produce. They apply for open circuits and dry material with a bulk density of 1600kg/m³. As a crusher is part of a process, its performance depends on crushability and density of the material, proper selection and operation of feeders, conveyors, screens, supporting structure, electric motors, drive components and surge bins. Contact us for choosing the right machine for your application.



S-SERIES

Approximate capacity in t/h with crusher running at CSS (mm)

Model	Max motorsize (kw)	Max feedsizes (mm)	19	22	25	29	32	35	38	41	44	51	54
380S	150	EC	355	110-130	120-140	135-195	140-260	160-275	160-350	170-370	180-390	200-290	210-240
		C	295	95-110	105-150	110-160	120-225	130-285	140-305	145-325	155-340	165-300	-
480S	220	EC	445	230-265	245-285	260-380	295-510	310-535	345-595	360-520	-	-	-
		C	395	220-320	235-340	250-435	280-580	295-510	330-380	-	-	-	-
680S	315	EC	555	-	290-335	310-355	345-495	365-630	405-820	425-980	460-1065	485-1120	520-1205
		C	495	260-300	280-400	295-425	330-575	350-705	390-900	405-940	440-1020	465-940	500-720

H-SERIES

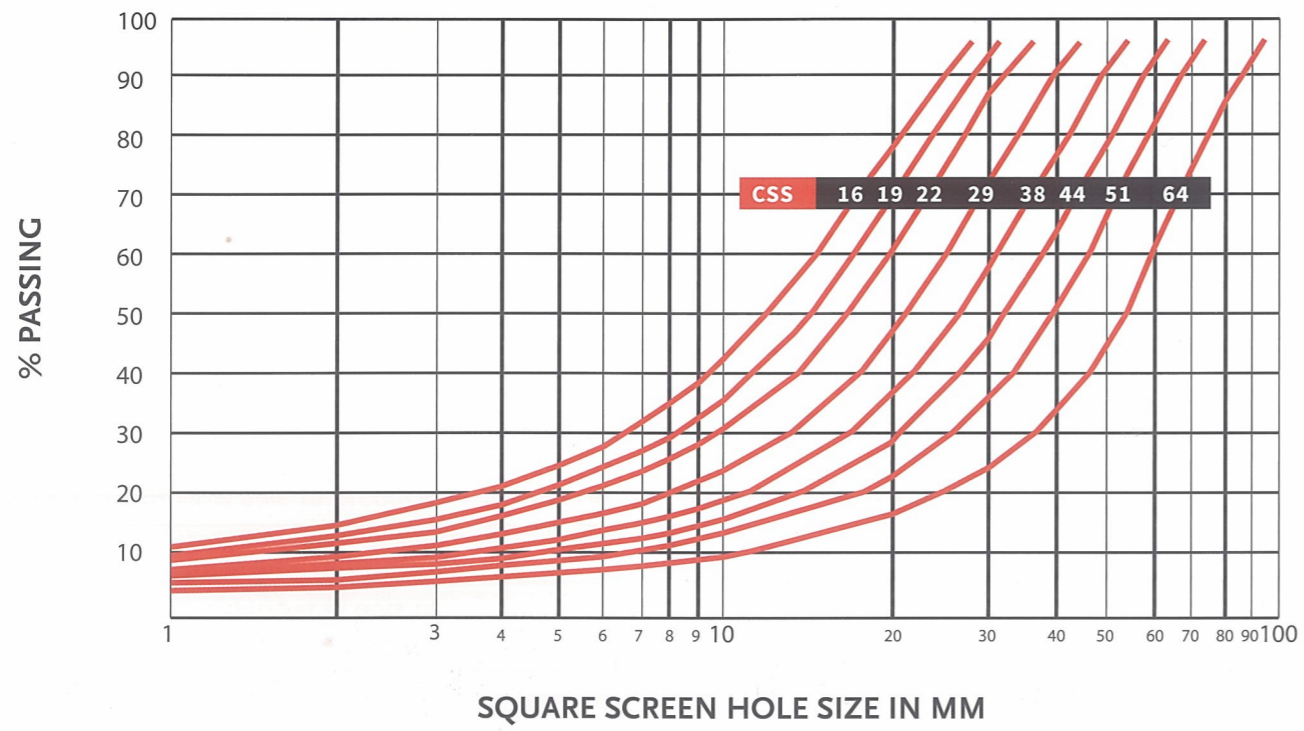
Approximate capacity in t/h with crusher running at CSS (mm)

Model	Max motorsize (kw)	Max (mm)	6	8	10	13	16	19	22	25	32	38	44	51	
380H	150	EC	185	-	-	-	65-120	70-165	75-180	80-190	85-205	100-235	110-235	-	-
		C	140	-	-	65-80	60-145	65-160	70-170	75-180	80-195	95-220	105-165	-	-
		MC	110	-	-	50-60	55-155	60-170	65-180	70-195	75-205	90-160	-	-	-
		M	85	-	55-70	60-95	65-145	70-160	75-170	80-180	85-170	100-115	-	-	-
		MF	60	-	55-65	60-115	65-125	70-140	75-140	80-125	85-100	-	-	-	-
480H	220	F	45	45-85	45-90	50-95	55-105	60-115	65-115	70-85	-	-	-	-	
		EC	205	-	-	-	110-225	115-310	125-335	135-355	155-405	170-450	185-435	-	
		C	165	-	-	-	95-110	105-245	110-330	120-355	130-375	145-430	160-380	180-260	-
		MC	135	-	-	-	90-135	100-295	110-320	115-340	125-365	140-375	155-275	-	-
		M	100	-	-	-	110-210	120-315	130-340	140-360	150-385	170-320	190-220	-	-
680H	315	MF	75	-	-	110-125	120-255	130-275	140-295	150-320	160-340	180-280	-	-	
		F	60	75-90	85-150	90-195	100-215	105-230	115-250	125-265	130-285	150-235	-	-	
		EC	295	-	-	-	-	170-200	185-385	200-495	210-530	230-625	265-690	295-755	325-580
		C	205	-	-	-	-	165-215	180-420	190-545	205-580	235-665	260-735	285-585	310-400
		MC	165	-	-	-	-	155-285	170-485	180-520	195-550	220-630	245-570	270-415	-

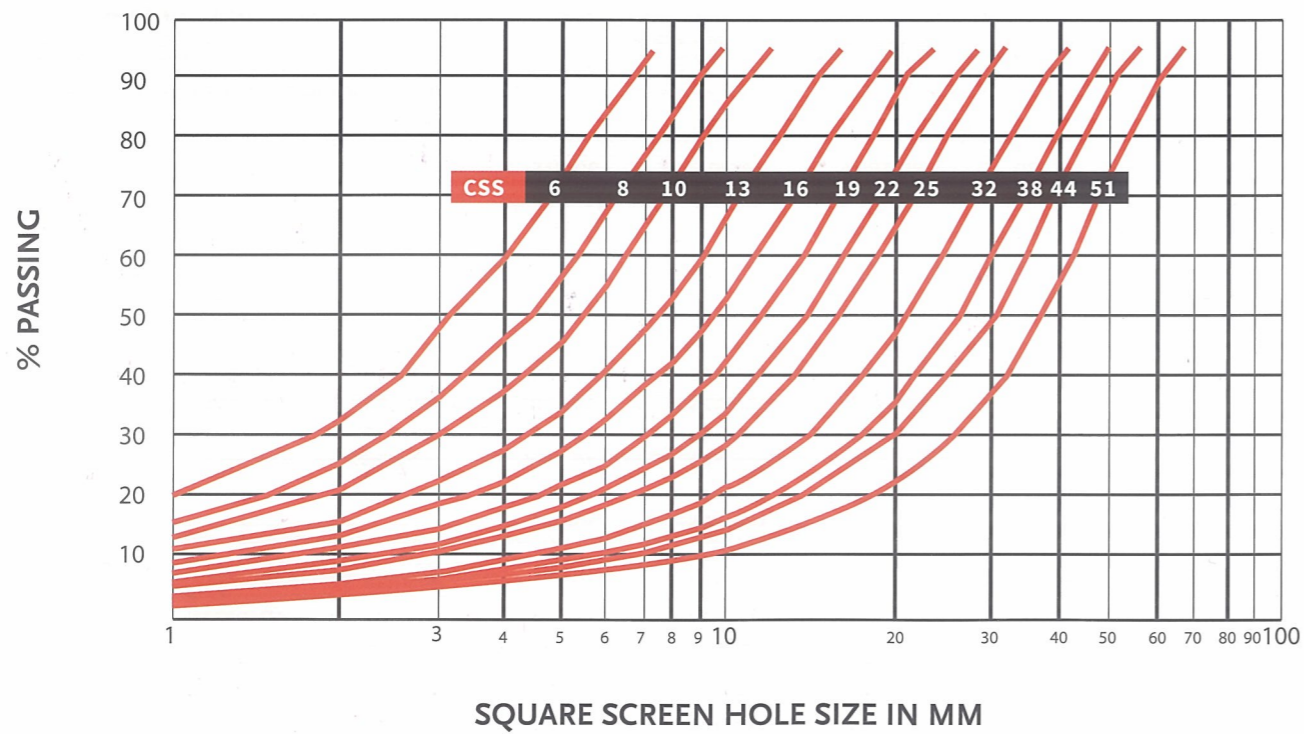
GRADATION CURVES

The gradation and capacities shown are dependant on the feed gradation, the crushing chamber, the material density, the material cleanliness, its moisture and its crushability.

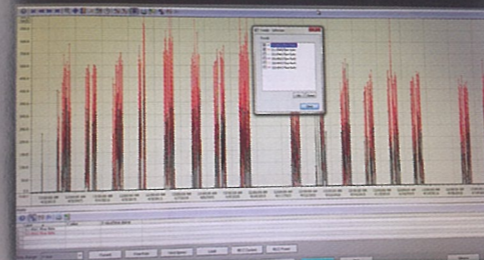
S-SERIES



H-SERIES



Capacity in tph with crusher running result.



380S-C and 480H-MC Cone Crusher